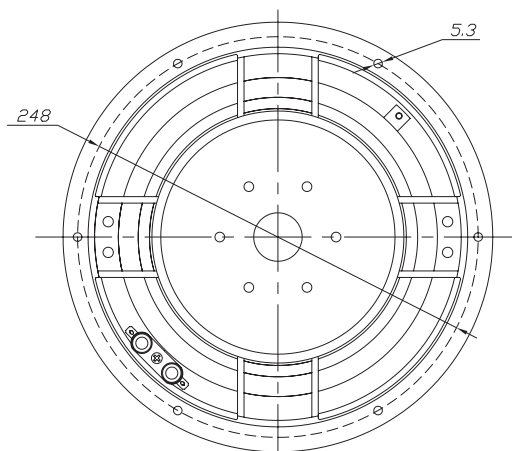
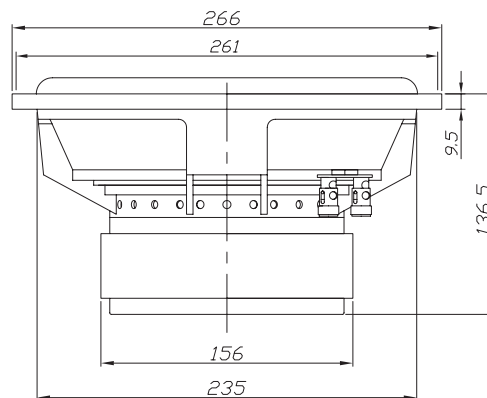


Features

- Heavy gauge black anodized aluminum cone
- 2-1/2" 4-layer voice coil
- Fully vented construction
- Triple-shorting-ring motor
- Rigid cast frame
- Rubber surround
- High power handling

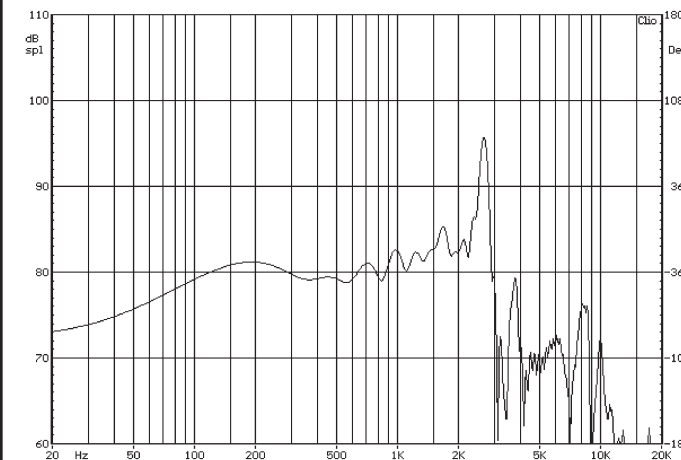
Parameters

Impedance (Ω)	4
Re (Ω)	3.4
Le (mH) @ 1 kHz	1.90
Fs (Hz)	30.3
Qms	4.48
Qes	0.40
Qts	0.37
Mms (g)	208.6
Cms (mm/N)	0.13
Sd (cm ²)	349.7
Vd (liters)	430.1
BL (Tm)	18.30
VAS (liters)	22.8
XMAX (mm)	12.3
VC Diameter (mm)	64
SPL (dB@1W/1m)	84.0
RMS Power Handling (w)	600
Usable Frequency Range (Hz)	24 - 600



Note: All dimensions in mm.

Frequency Response



Note: Due to testing limitations, response below 200 Hz is not an actual representation.

Impedance/Phase

