

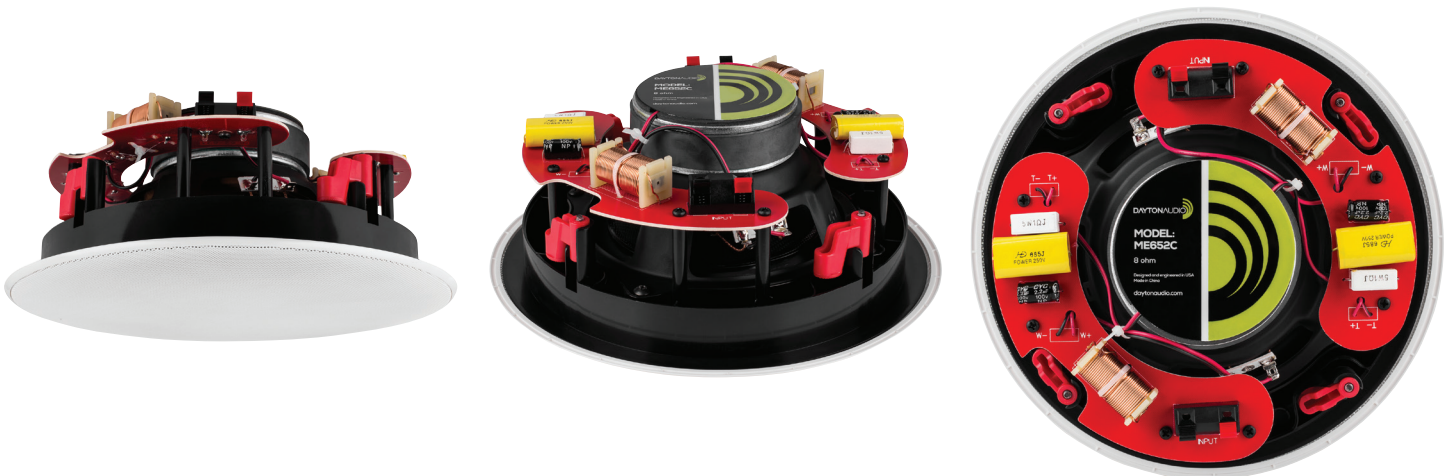
6-1/2" DUAL CHANNEL CEILING SPEAKER

Model: ME652C

Description: When installing multi-room audio in a confined space such as a kitchen, bathroom, or hallway, you might be tempted to use a single conventional in-ceiling speaker, connected to one amplifier channel. But you'd be missing half the music. Dayton Audio's ME652C Micro-Edge™ series dual channel ceiling speaker makes it possible to preserve both channels of an audio source, for the complete musical experience with rich tone and excellent sonic detail even in these tight spaces.

Features:

- Contemporary low profile grill design with magnetic grill retention
- Long-throw woven Kevlar® cone woofers with rubber surround and dual voice coil
- Coaxially mounted dual 1" silk dome tweeters for single-point stereo use
- Twin 12 dB/octave optimized crossovers with exclusive tuning by Dayton Audio
- Timbre-matched to other Micro-Edge series in-wall/in-ceiling speakers



Technical Specifications:

| Model | ME652C |
|---------------------------|-------------------|
| Woofers | 6.5" Kevlar cone |
| Tweeter | 1" silk x 2 |
| Frequency response | 50-20,000 Hz |
| Cut-out size | 8.25" dia. |
| Power handling (RMS/Peak) | 35W/70W |
| Impedance | 8 + 8 ohm (dual) |
| SPL (1W/1m) | 88 ±3 dB |
| Xover point | 3,000 Hz |
| Xover slope | 12 dB/octave |
| Tweeter attenuation (dB) | N/A |
| Weight | 4.9 lbs. |
| Dimensions | 9.75" dia. x 4" D |

Architect & Engineer Specifications:

The loudspeaker shall be a Dayton Audio ME652C (8 + 8 ohm (dual) impedance) with a power handling capacity of 35 watts RMS. The dual channel loudspeaker shall consist of one 6.5" long-throw woven DVC Kevlar woofer and two coaxial mounted 1" silk tweeter with a 12 dB/octave crossover network to split the frequencies between transducers. The loudspeaker shall feature a removable white grill with magnetic retention.

The loudspeakers shall have the Micro-Edge low profile grill design with magnetic grill retention for ceiling installed applications.

The low frequency transducer shall use a long-throw woven DVC Kevlar woofer with a rubber surround and dual voice coil.

The high frequency transducer shall be two coaxial mounted 1" silk dome tweeter.

The package shall include a pair of Dayton Audio Micro-Edge In-Wall Speakers with grills and one speaker installation template. The tweeter shall have pivoting tweeters to direct sound to the listener.

The loudspeaker shall have a frequency response of 50-20,000 Hz and a maximum SPL (1W/1m) of 88 dB ±3 dB (combined). The loudspeaker crossover point shall be 3,000 Hz with a 12 dB/octave slope.

The loudspeaker shall have dimensions of 9.75" dia. x 4" D. The loudspeaker shall require an 8.25" diameter cutout.



daytonaudio.com
tel + 937.743.8248
info@daytonaudio.com

705 Pleasant Valley Dr.
Springboro, OH 45066
USA

