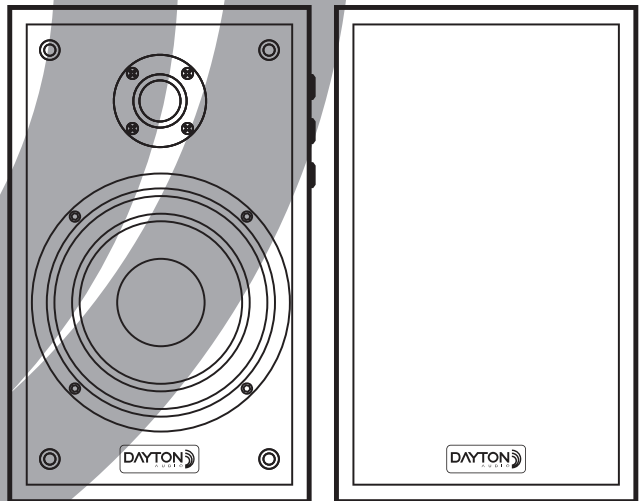


CLASSIC COLLECTION

Product Manual



Classic B40A | B65A



CAUTION
RISK OF ELECTRIC SHOCK
DO NOT OPEN



WARNING:

To reduce the risk of fire or electric shock, do not expose this apparatus to rain or moisture.

The apparatus shall not be exposed to dripping or splashing and that no objects filled with liquids, such as vases, shall be placed on apparatus.

1. Read these instructions.
2. Follow these instructions.
3. Comply with all warnings.
4. Follow all instructions.
5. Do not use this device near water.
6. Use only a dry cloth for cleaning.
7. Do not block the ventilation holes.
Install according to the manufacturer's instructions.
8. Do not install it near heat sources such as radiators, sockets, stoves, or other devices that generate heat (including amplifiers).
9. Do not bypass the safety device of the polarized plug. The polarized plug has two blades, one not wider than the other. Providing large blades is for our safety. If the provided plug is not suitable for your socket, please consult an electrician to replace the outdated socket.
10. Protect the power cord, especially the plug, socket, and point of removal from the device, to prevent stepping on or pinching the power cord.
11. Use only accessories specified by the manufacturer.
12. Remove this device during thunderstorms or prolonged periods of inactivity.
13. Repairs and maintenance shall be carried out by qualified service personnel. When the device is damaged by any of the following types, it must be repaired: power cord or plug damage, liquid overflow or falling into the device, device exposure to rainwater or moisture, malfunction or falling.
14. Bare fire sources, such as illuminated candles, should not be placed on the device.
15. Warning: To reduce the risk of fire or electric shock, do not expose this device to rain or moisture. The device shall not be exposed to dripping or splashing, and objects filled with liquid, such as vases, shall not be placed on the device.
16. Warning: The main plug/device coupler is used as a disconnecting device, and the disconnecting device should be kept operable at any time.
17. Properly handle this product. This mark indicates that the product should not be disposed of together with other household waste across the European Union. In order to prevent potential harm to the environment or human health caused by uncontrolled waste disposal, responsible recycling of waste should be carried out to promote the sustainable reuse of material resources. To return the product, please use the return and payment system or contact the retailer who purchased the product. They can use this product for environmentally safe recycling.
18. The equipment should be used at a maximum ambient temperature of 40 degrees Celsius.
19. The product must be used on an open workbench.

FCC Statement

This device complies with Part 15 of the FCC Rules. Operation is subject to the following two conditions:

(a) This device may not cause harmful interference. (b) This device must accept any interference received, including interference that may cause undesired operation.

NOTE 1: This equipment has been tested and found to comply with the limits for a Class B digital device, pursuant to part 15 of the FCC Rules. These limits are designed to provide reasonable protection against harmful interference in a residential installation. This equipment generates uses and can radiate radio frequency energy and, if not installed and used in accordance with the instructions, may cause harmful interference to radio communications. However, there is no guarantee that interference will not occur in a particular installation. If this equipment does cause harmful interference to radio or television reception, which can be determined by turning the equipment off and on, the user is encouraged to try to correct the interference by one or more of the following measures:

- Reorient or relocate the receiving antenna.
- Increase the separation between the equipment and receiver.
- Connect the equipment into an outlet on a circuit different from that to which the receiver is connected.
- Consult the dealer or an experienced radio/TV technician for help.

NOTE 2: Changes or modifications not expressly approved by the party responsible for compliance could void the user's authority to operate the equipment. This equipment should be installed and operated with minimum distance 20cm between the radiator & your body.

Welcome

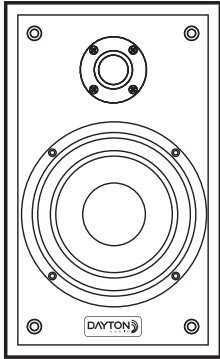
Thank you for choosing the Dayton Audio Classic Collection of loudspeakers. These speakers are designed to provide a clear and immersive listening experience for music of all genres. Dive into your favorite music, movies, and games, and discover a whole new level of audio richness.

This series features a sleek contemporary design with a vintage flair. The range includes two powered bookshelf speakers; one with a compact 4" woofer and the other with a 6.5" woofer. The internal amplifier built into these speakers makes set up and operation a breeze, simply plug them in, connect to Bluetooth or a wired source device, and start listening right away!

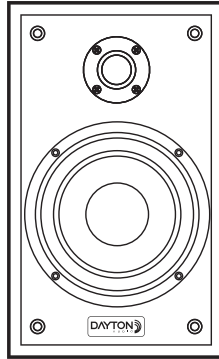
Contents

Welcome.....	1
What's In The Box	2
Unpacking	2
Panels and Controls.....	3
Hooking Up	4
Connecting Speakers	4
Connecting To Power	5
Connecting Sources.....	5
Bluetooth as a Source	5
Using Your Speakers.....	6
Installing Rubber Feet (optional)	6
Care and Maintenance	6
Troubleshooting	7
Specifications	8
Notes.....	9

What's In The Box



Active (powered)
Speaker



Passive (unpowered)
Speaker



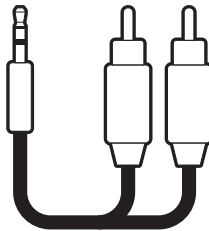
2x Removable
Grills



Power
Cable



Speaker
Cable



3.5 mm AUX
to RCA Cable



8x Adhesive
Rubber Feet



This
Manual

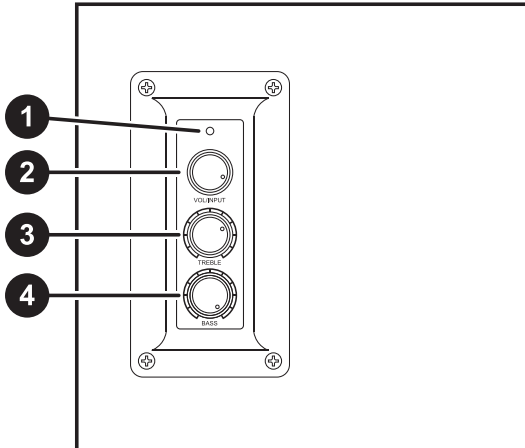
Unpacking

Please unpack the speakers and carefully examine them for any potential damage that may have occurred during shipping. If damage is discovered, it is important to inform the shipping company promptly.

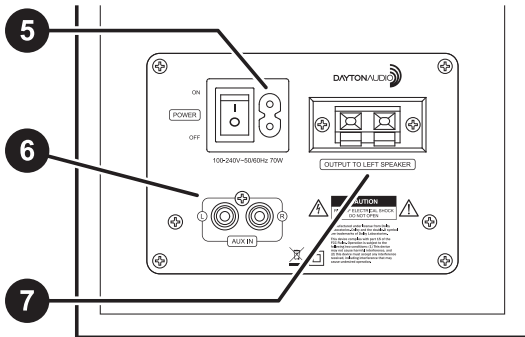
While Dayton Audio is available and willing to assist as necessary, only the recipient can initiate a claim for any shipping-related damage. If the product shows visible signs of damage upon arrival, be sure to retain the shipping carton for the shipper's inspection.

It is strongly advised to keep all packing materials, as they may be useful in the future if the speakers ever need to be transported or stored. Never attempt to ship the speakers without the original factory carton and the accompanying packing materials.

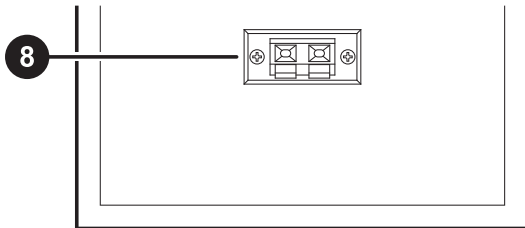
Panels and Controls



Active Speaker Side Panel



Active Speaker Rear Panel



Passive Speaker Rear Panel

1. Input Status Indicator

Green – Aux

Blue – Bluetooth

2. Volume/Input

- Turn this to control the output volume

- Press the knob to switch between inputs

3. Treble Control

4. Bass Control

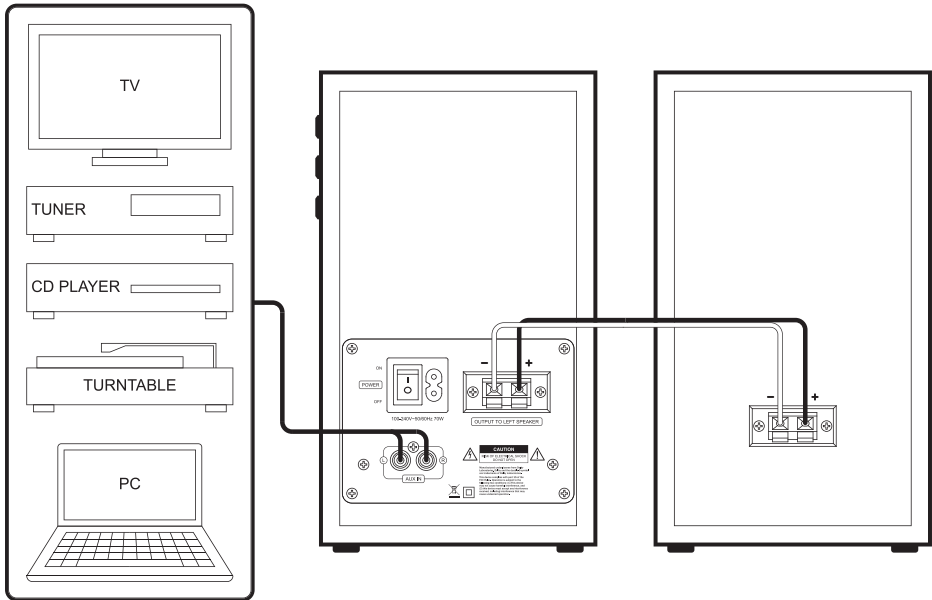
5. AC Power Input

6. Line Level Aux Input

7. Speaker Output Terminals

8. Passive Speaker Input

Hooking Up



Connecting Speakers

Using the supplied speaker wire, connect the output of the powered speaker to the input of the passive speaker. Connect the red connector to positive (+) on both speakers and the black connector to negative (-) on both speakers. If this cable is installed incorrectly, the speakers will be out of phase and lack bass and proper imaging.

For custom cabling solutions be sure to use high-quality two conductor speaker wire. Using poor-quality cable can result in diminished sound quality and can potentially cause damage to the speaker or amplifier.

Connecting To Power

Classic Collection has a built-in universal power supply and is capable of accepting power in any country. Connect the included power cable to the AC input on the rear of the powered speaker and to mains power.

Turn the main power switch on the rear of the speaker to “ON” to power on the speakers.

Connecting Sources

Classic Collection can receive signals directly from a wide variety of sources. Using high quality cable will ensure the best possible transmission from connected devices.

Bluetooth as a Source

Bluetooth is built into the Classic Collection speakers for convenient wireless streaming.

1. Select the Bluetooth input by pressing the Volume/Input control knob until the indicator light turns blue.
2. Using a smartphone, tablet, computer, or other device capable of transmitting Bluetooth audio, go to the device's settings and scan for available Bluetooth devices.
3. Look for and select “B40A” or “B65A” in the device list and begin pairing. The Bluetooth source light on the side control panel will flash until a device is paired.
4. Once the Bluetooth source light stops flashing and the device indicates that it is connected, begin streaming your favorite music from up to 30 feet away.

Using Your Speakers

Speakers often exhibit a noticeable improvement after a break-in period of around 30 to 40 hours of playtime. During this initial phase, the soft parts of the drivers (surround and spider) will relax and become more compliant, resulting in enhanced detail for improved audio quality.

To break-in speakers effectively, play a diverse selection of music at moderate volume levels. This allows the speaker's transducers to settle and relax, optimizing their performance. It is worth noting that even after this initial break-in period, further improvements in sound quality can continue to develop over time, ensuring an even more satisfying listening experience.

Installing Rubber Feet (optional)

Adhesive-backed rubber feet are included with bookshelf and center channel speakers and can be applied to the underside of each loudspeaker. These feet will help keep the speakers firmly in place when installed on a bookshelf or speaker stands. The use of these rubber feet is optional and will not be required in all installations.

Care and Maintenance

The finish on the cabinets can be maintained with regular dusting. For extreme buildup of dust or debris a slightly dampened microfiber cloth can be used. Exercise caution to not get moisture on the driver components.

If you do wish to use a cleaning solution, please do so by applying a small amount to an inconspicuous part of the cabinet such as the bottom before applying to the entire cabinet. Do this to ensure that the solution will not cause harm to the finish of the Classic Collection cabinets.

Troubleshooting

Problem	Cause	Solution
The unit fails to turn on	The power cable is not connected properly	Check to make sure both ends of the power cable are connected properly.
	Protection circuit has been activated	Turn the speakers off and check that the speaker wires are not shorting out. If this problem persists please contact Dayton Audio for customer support.
No sound	The volume is turned down or muted	Turn the volume up to disable mute.
	Correct input has not been selected	Verify that the proper input is selected.
	Incorrect cable connections	Double check that the device you are trying to listen to is connected to the correct input.
The sound is distorted	The input signal might be too high and is clipping the input of the speaker	Turn down the level of the source signal until the distortion is no longer present.
Low volume	Volume on the playback device is turned down	Verify that any volume control the connected preamplifier, mixer, or playback device is turned up.
The sound output lacks bass	The speakers polarity is reversed	Double check the speaker connections, ensuring that the + and - terminals are connected properly on both speakers. (pg 4)

Specifications

MODEL	B40A	B65A
Frequency Response	75 - 20,000 Hz	55 - 20,000 Hz
Potential Output	95 dB	98 dB
Power Output	140W max (70W RMS)	
Transducers		
High Frequency	1" Silk Dome Tweeter	1" Silk Dome Tweeter
Low Frequency	4" Poly Woofer	6-1/2" Poly Woofer
System Format	2-Way Bookshelf	
Bass Alignment	Sealed Enclosure	
Crossover Frequency	5 kHz	4 kHz
Inputs		
Line Input	Stereo RCA	
Bluetooth	5.0	
Outputs		
Speaker Terminals	Push Spring Terminal	
General		
Power Requirement	100-240V, 50/60 Hz	
Amplification	Class D	
Dimensions (each) W x H x D	5.5 x 9.5 x 5.7 in. 140 x 241 x 145 mm	7.8 x 13 x 6.7 in. 198 x 330 x 170 mm
Net Weight (Active)	4.39 lbs. (1.99 kg)	6.5 lbs. (2.95 kg)
Net Weight (Passive)	3.73 lbs. (1.69 kg)	5.8 lbs. (2.63 kg)
Finishes Available	Black Wood	

All specifications are accurate at the time of printing.
Dayton Audio reserves the right to make improvements without notice.

Notes

Date Purchased: _____

5-Year Limited Warranty

See daytonaudio.com for details



daytonaudio.com
tel + 937.743.8248
info@daytonaudio.com

705 Pleasant Valley Dr.
Springboro, OH
45066 USA

